

Help map the distribution of invasive Cotton bush!

1 Find some cotton bush plants

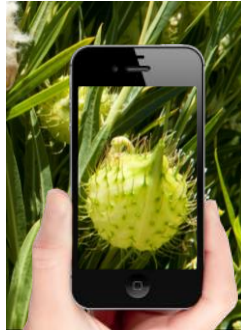


Photos: DPIRD

2 Photograph the plant and any insects or diseases



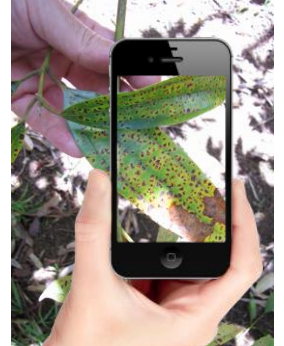
Take a photo of the infestation
in the landscape



Take a photo of
any flowers or
fruits



Take a photo of
any insects



Take a photo of
any damaged or
diseased plants

Look out for insects like...



Wanderer
caterpillar
(*Danaus
plexippus*)



Oleander
aphid
(*Aphis nerii*)



Common
milkweed bug
(*Arocatus
rusticus*)

www.brisbaneinsects.com

3 Report your observations using MyPestGuide™ Reporter

Cotton bush experts will automatically be notified when you have made a report.

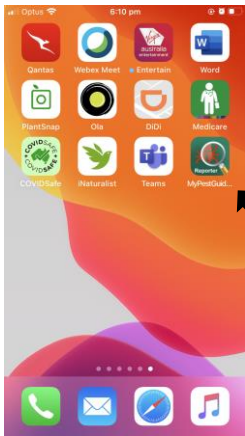
Experts will identify the plants and insects in your photographs and reply back to you with advice.

mypestguide.agric.wa.gov.au

Follow the instructions below when surveying for cotton bush

1 Download MyPestGuide™ Reporter from the app store

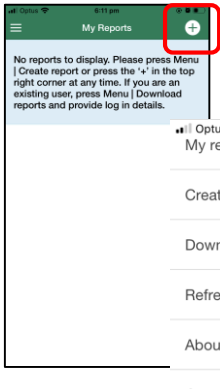
2 Open the app on your device



Select the **MPG™ Reporter** icon and wait for the splash screen to appear.

Close the Quick start screen or select 'Don't show again'.

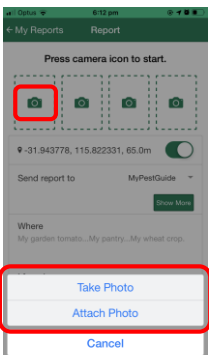
3 Create a report



Select the '+' symbol or use the menu to start

No reports | Create re right corn existing us reports an

4 Attach your photos

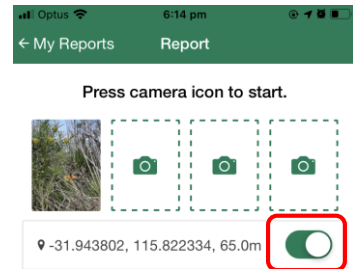


Press the camera icon to start

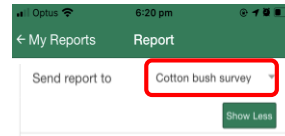
Or use your device to snap a photo then share it to the app

Take or attach up to 4 photos

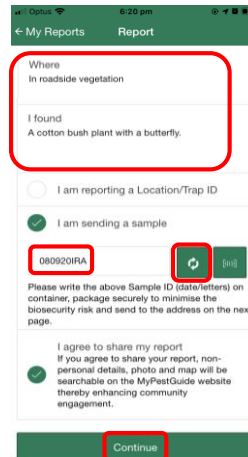
5 Check location is turned ON



6 Select 'cotton bush survey'



7 Enter observation details



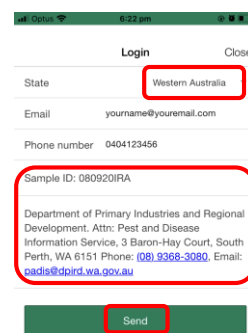
Enter details of your observation

If collecting a sample tick 'I am sending a sample'. Select 'refresh' symbol to generate a **sample ID** and write this on your container.

Click 'I agree to share my report'

Click 'Continue'

8 Confirm your contact details



Select you **State**

Enter your **Email** and **Phone number**
Write **sample ID** on the container if sending a sample.

Click 'Send'!

For more information, contact:

Dr. Karen Bell
karen.bell@csiro.au
Phone: 08 9333 6027

Mike Christensen
mike.christensen@swccnrm.org.au
Phone: 08 9724 2415